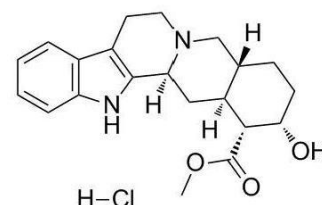


---

<b>Product Name:</b>	Yohimbine ( Hydrochloride)
<b>Cat. No.:</b>	HY- N0127
<b>CAS No.:</b>	65-19-0
<b>Molecular Formula:</b>	C <sub>21</sub> H <sub>27</sub> ClN <sub>2</sub> O <sub>3</sub>
<b>Molecular Weight:</b>	390.90
<b>Target:</b>	Adrenergic Receptor
<b>Pathway:</b>	GPCR/G Protein
<b>Solubility:</b>	DMSO: < 12.4 mg/mL



## BIOLOGICAL ACTIVITY:

Yohimbine hydrochloride is an alpha 2 –adrenoreceptor antagonist, blocking the pre – and postsynaptic alpha–2 adrenoreceptors and causing an increased release of noradrenaline and dopamine.

IC50 value:

Target:

In vitro:

In vivo: Yohimbine hydrochloride (0.2 mg/kg, i.p.) was administered to rats 1h before the stress session daily for 14 consecutive days and its effect was assessed. Results of this section revealed that, immersion of rats in cold water significantly decreased sexual arousal and motivation as indicated by increased latencies and intervals. Decreased copulatory activity was confirmed by decreased testosterone, luteinizing hormone (LH) and follicle–stimulating–hormone (FSH) levels as well as decreased cholesterol content in rat testes. Treatment with yohimbine significantly increased the sexual arousal and potency and corrected the effects induced by stress on the mating behavior of male rats [1].

## References:

- [1]. Saad MA, et al. Potential effects of yohimbine and sildenafil on erectile dysfunction in rats.
- [2]. Docherty JR. Yohimbine antagonises  $\alpha$ 1A – and  $\alpha$ 1D–adrenoceptor mediated components in addition to the  $\alpha$ 2A–adrenoceptor component to pressor responses in the pithed rat. *Eur J Phar macol.* 2012 Mar 15;679(1–3):90–4.
- [3]. Lahiri P, et al. Platelet responsiveness to yohimbine hydrochloride and MRS2179 in the context of the interaction between collagen and epinephrine in acute coronary syndrome. *Blood Cells Mol Dis.* 2009 Jul–Aug;43(1):105–10.

**Caution: Product has not been fully validated for medical applications. For research use only.**

Tel: 86-0756-5200989 Fax: 86-0756-5200989 E-mail: [sale@oneraw.net](mailto:sale@oneraw.net)

Address: No. 902, Jilong Road, Jimei District, Xiamen, Fujian, China